



*Innovations*

in Surface Technology

# Passion

for innovation



## Diversity in seven areas

- Pre-treatment
- Powder coating
- Wet painting
- Drying
- Automation
- Dedusting
- Fans

:: The Rippert Group has been producing modern plants for the coating of surfaces, reliable technology for air pollution control and a wide range of industrial fans for two generations at its location in Clarholz.

Over 300 employees work at the dynamically developing company and are constantly searching for innovative solutions for customers all over the world. High customer satisfaction, excellent product quality and reliable delivery dates thereby play a large part.



Technical know-how // State-of-the-art production technology // Guaranteeing the future through training // Engineering

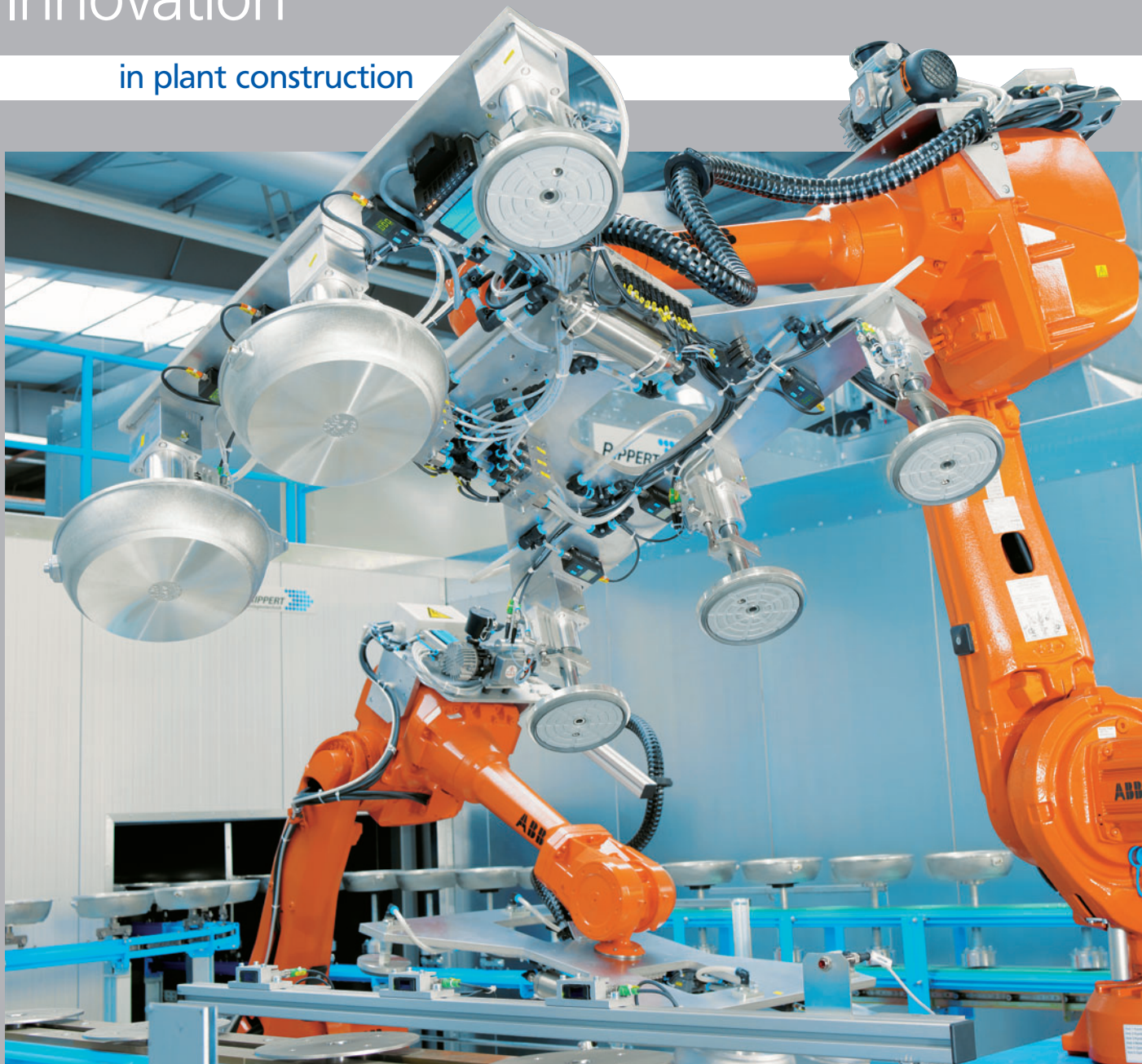


Main works in Clarholz



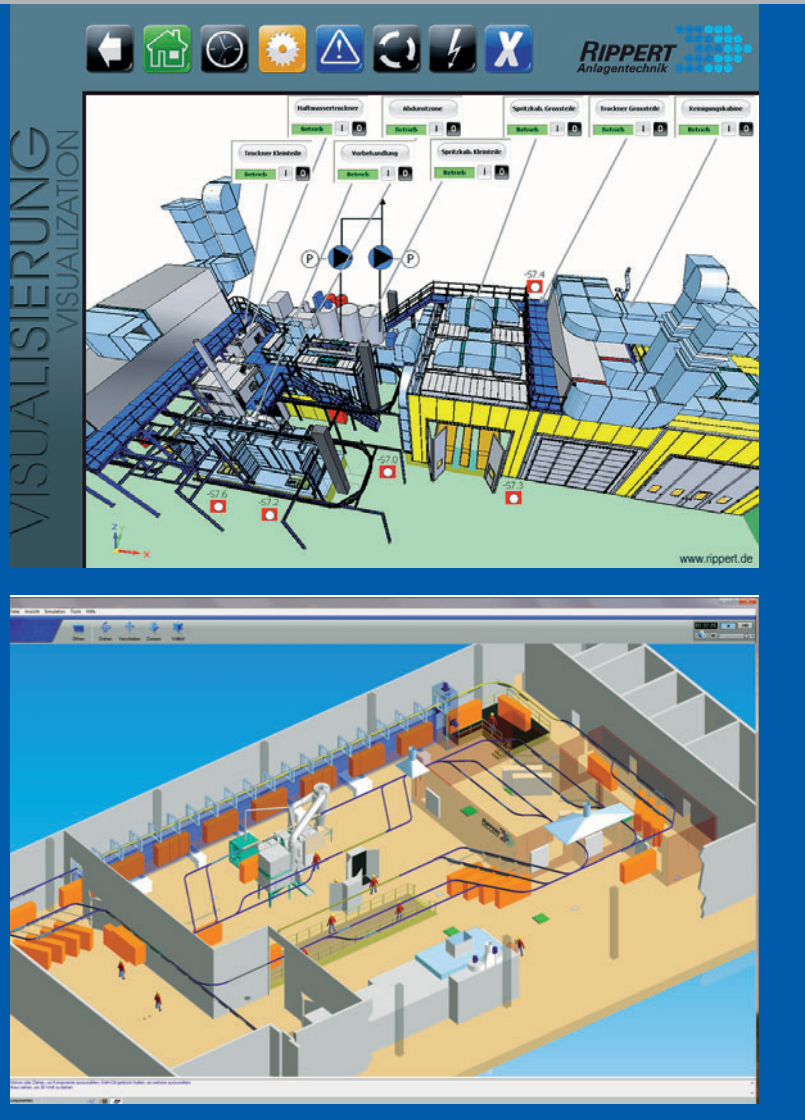
# Innovation

in plant construction





## Automation // Visualisation // Simulation



:: The question of how surface coating plants can be optimally integrated into a production environment arises with ever increasing frequency. It is often the case that the components to be coated have to be transported to the plant and have to be handed over and fed in there before being taken to the dispatch department or for final assembly.

Rippert offers its customer an 'everything from one source solution' here. Our own engineers develop coordinated solutions for the transport and handling of parts together with the customer. Simulation is thereby often the right tool for recognising the full potential of these possibilities.

From frying pans to heavy workpieces from the wind power sector, Rippert has already 'taken it all in hand'.

# Pre-treatment

the foundation of a perfect surface



:: The most important component of a good surface is the one you don't see: a good pre-treatment. The materials to be processed are thereby decisive. From steel to aluminium to plastics, Rippert has developed numerous processes for cleaning, degreasing, phosphatisation and etching or for conversion treatment.





# Drying

a hot topic



:: The energy consumption of a surface coating plant is substantially determined by the right choice of dryer. That applies equally to adhesive water dryers, powder enamelling furnaces or paint dryers.

If one regards the total costs of a coating plant over a period of 20 years, then the initial purchase price constitutes only about 10 - 20% of the total costs. The remainder is essentially determined by personnel and energy costs. Against the background of further rising prices, energy consumption will be decisive for the profitability of a coating plant more than ever in future.



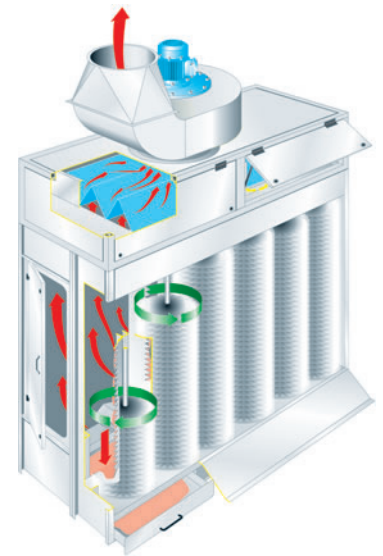
# Wet painting

gloss for all materials





## Wet paint // Dipping paint // Anodic and cathodic dip coating

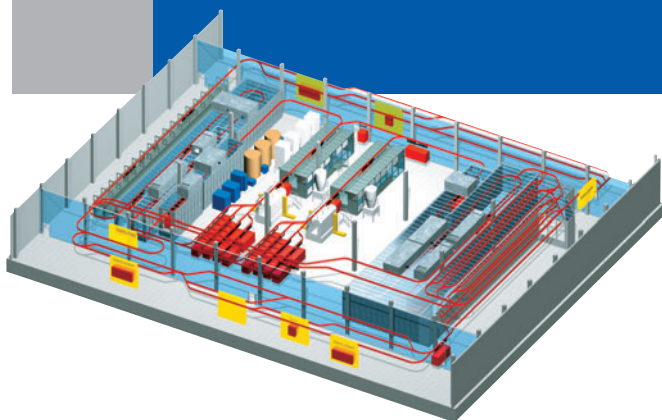


:: High gloss wood surfaces are just one possible application for wet paints. Water or solvent-based paints are used in Rippert wet coating plants, depending on the task.

Here too, the Rippert product range extends from simple spray walls or booths to extraction systems with filters and fully automatic complete systems.

# Powder coating

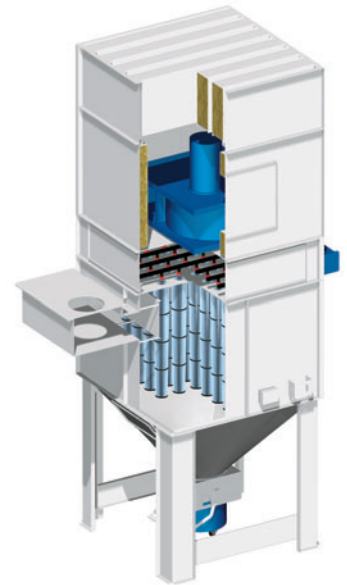
environmentally friendly and versatile



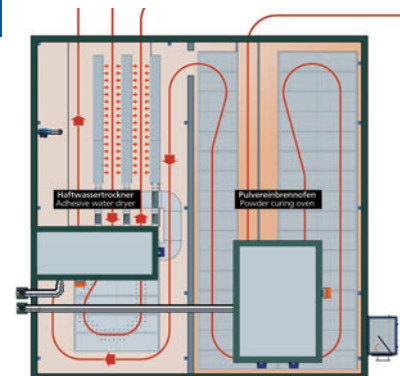
:: Powder coating has proven itself over many years as a sound method of coating the most diverse components. Apart from good environmental compatibility (no solvents in the paint or resulting paint sludges), many other reasons speak for powder coating today. A hard-wearing and very corrosion-resistant surface along with a great deal of leeway for design are just a few of the advantages.



## Manual powder coating booths // Automatic plants



:: Naturally Rippert supplies all necessary components for powder coating, regardless of whether the customer wants a manual plant or a complex automatic system with powder recovery.





**Administration/Head Office Herzebrock-Clarholz**

Rippert Anlagentechnik GmbH & Co. KG // Paul-Rippert-Straße 2-8 // D-33442 Herzebrock-Clarholz  
Phone +49 (0) 52 45 | 9 01-0 // [info@rippert.de](mailto:info@rippert.de)

**Rippert Automation Systems**

Rippert Automation Systems GmbH  
Paul-Rippert-Straße 2-8 // D-33442 Herzebrock-Clarholz

**Works 1 Herzebrock-Clarholz**

Rippert Anlagentechnik GmbH & Co. KG  
Am Hanewinkel 20-28 // D-33442 Herzebrock-Clarholz

**Works 2 Herzebrock-Clarholz**

Rippert Anlagentechnik GmbH & Co. KG  
Heitkamp 22-32 // D-33442 Herzebrock-Clarholz

**Works 3 Herzebrock**

Rippert Anlagentechnik GmbH & Co. KG  
Carl-Miele-Straße 2-14 // D-33442 Herzebrock-Clarholz

**Austrian works**

Rippert Anlagentechnik GmbH  
Gewerbestraße 5 // A-9560 Feldkirchen i. K.  
Phone +43 (0) 42 76 | 3 90 18  
[info@rippert.at](mailto:info@rippert.at) // [www.rippert.at](http://www.rippert.at)

**Mössingen Branch**

Rippert Anlagentechnik GmbH & Co. KG  
Bahnhofstraße 14 // D-72116 Mössingen  
Phone +49 (0) 74 73 | 94 70-0 // [moessingen@rippert.de](mailto:moessingen@rippert.de)

**Altdorf Office**

Werkstraße 18 // D-90518 Altdorf  
Phone +49 (0) 91 87 | 9 08 82-16 // [schmeller@rippert.de](mailto:schmeller@rippert.de)

**Grünsfeld Office**

Achatiusweg 14 // D-97947 Grünsfeld  
Phone +49 (0) 93 46 / 928 166 // [bernhardt@rippert.de](mailto:bernhardt@rippert.de)

**Bad Hersfeld Branch**

Rippert Anlagentechnik GmbH & Co. KG  
Bismarckstraße 9a // D-36251 Bad Hersfeld  
Phone +49 (0) 66 21 | 64 06-0 // [badhersfeld@rippert.de](mailto:badhersfeld@rippert.de)

**Benelux Countries Branch**

Rippert Benelux B.V.  
Achter de Watertoren 11 // 2182 DV // Hillegom (Niederlande)  
Phone +31 (0) 252 | 52 74 88 // [info@rippert.nl](mailto:info@rippert.nl) // [www.rippert.nl](http://www.rippert.nl)